

1 μm

Mag = 10.00 K X

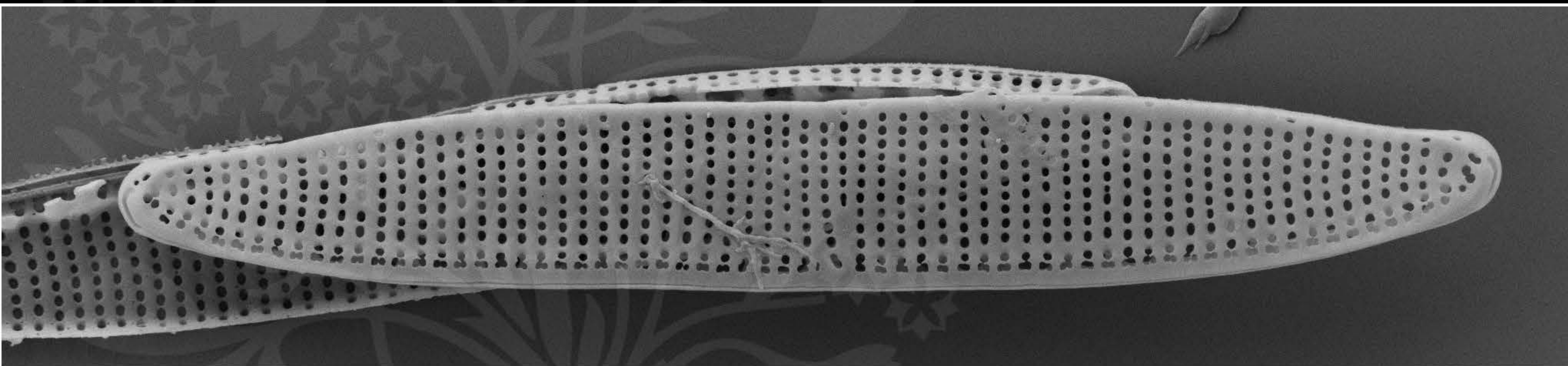
EHT = 5.00 kV

Signal A = SE2 Date :9 Jun 2017

WD = 4.3 mm

File Name = TCC885_01.tif





1 μm

Mag = 10.00 K X

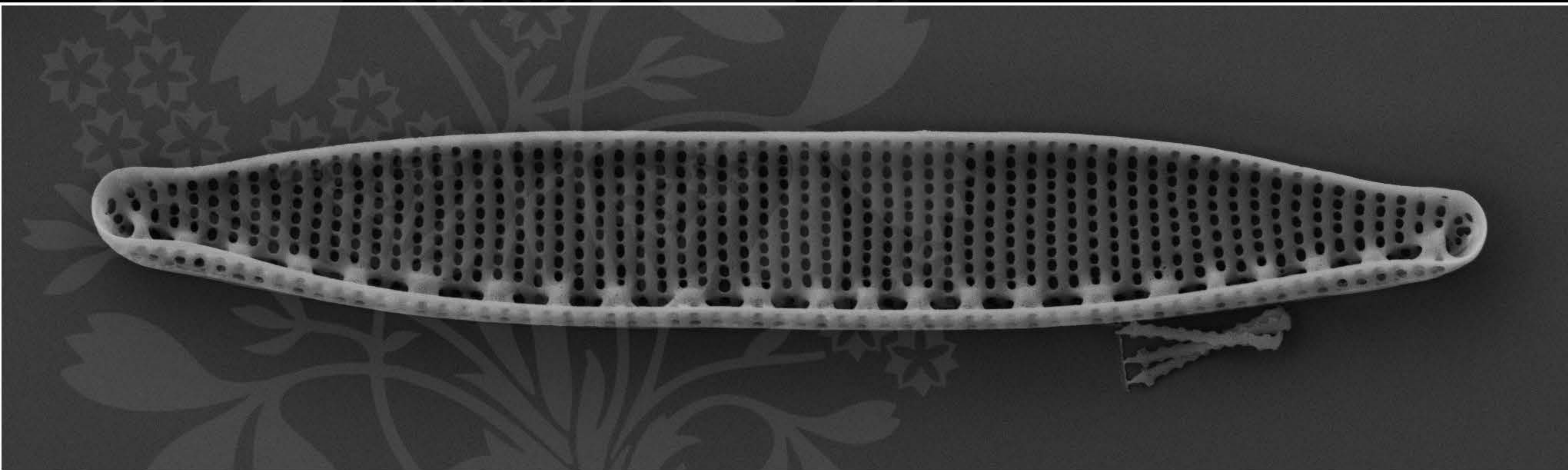
EHT = 5.00 kV

Signal A = SE2 Date :9 Jun 2017

WD = 4.3 mm

File Name = TCC885_02.tif





1 μ m

Mag = 10.00 K X

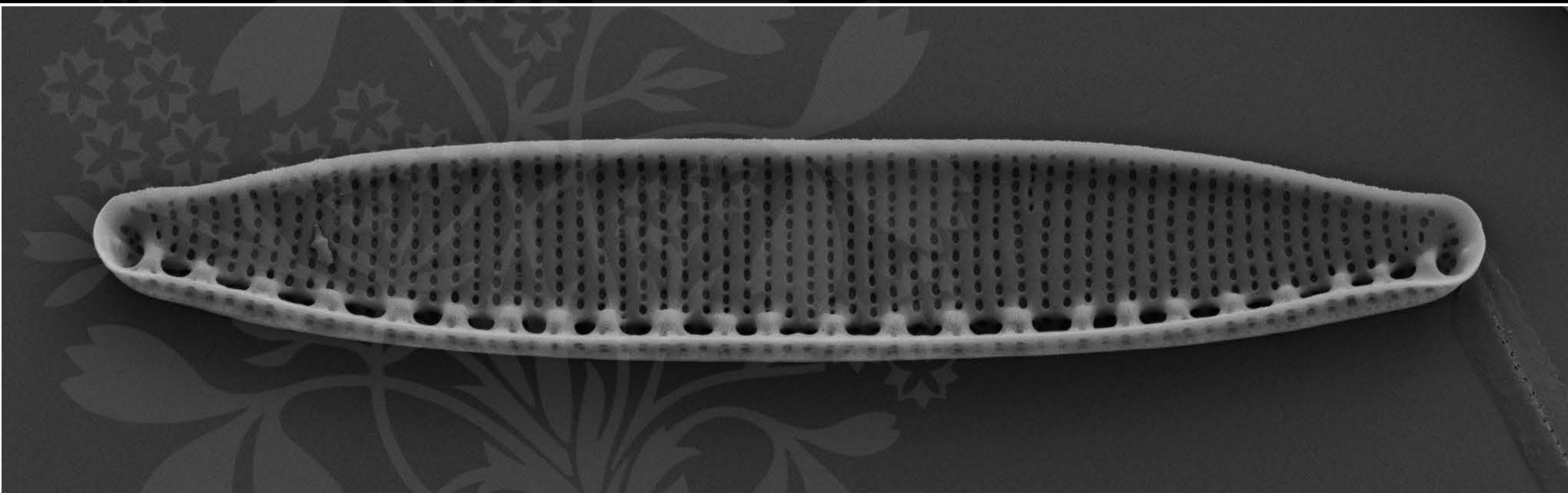
EHT = 4.50 kV

Signal A = SE2 Date : 3 Oct 2017

WD = 4.8 mm

File Name = TCC885_03.tif





1 μm

Mag = 10.00 K X

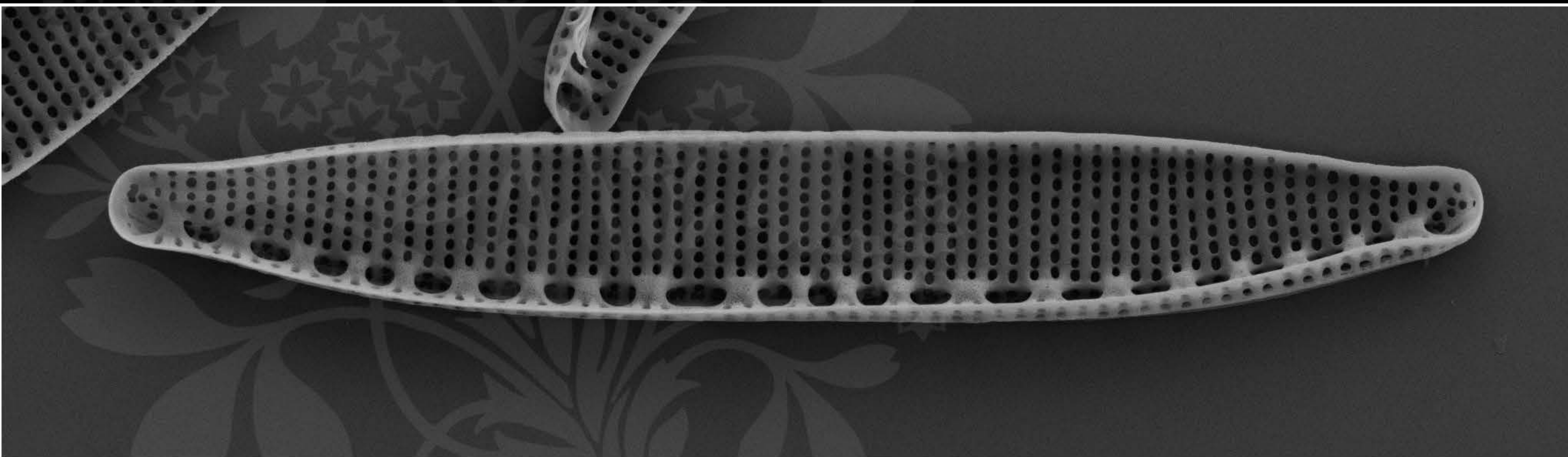
EHT = 4.50 kV

Signal A = SE2 Date :3 Oct 2017

WD = 4.8 mm

File Name = TCC885_04.tif





1 μm

Mag = 10.00 K X

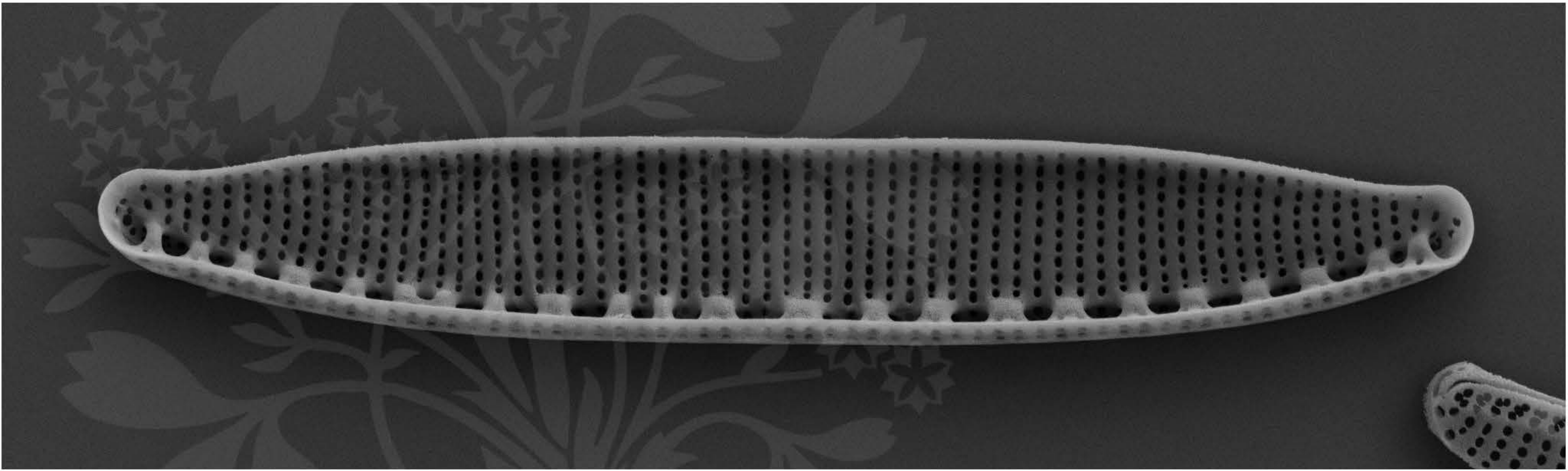
EHT = 4.50 kV

Signal A = SE2 Date :3 Oct 2017

WD = 4.8 mm

File Name = TCC885_05.tif





1 μ m

Mag = 10.00 K X

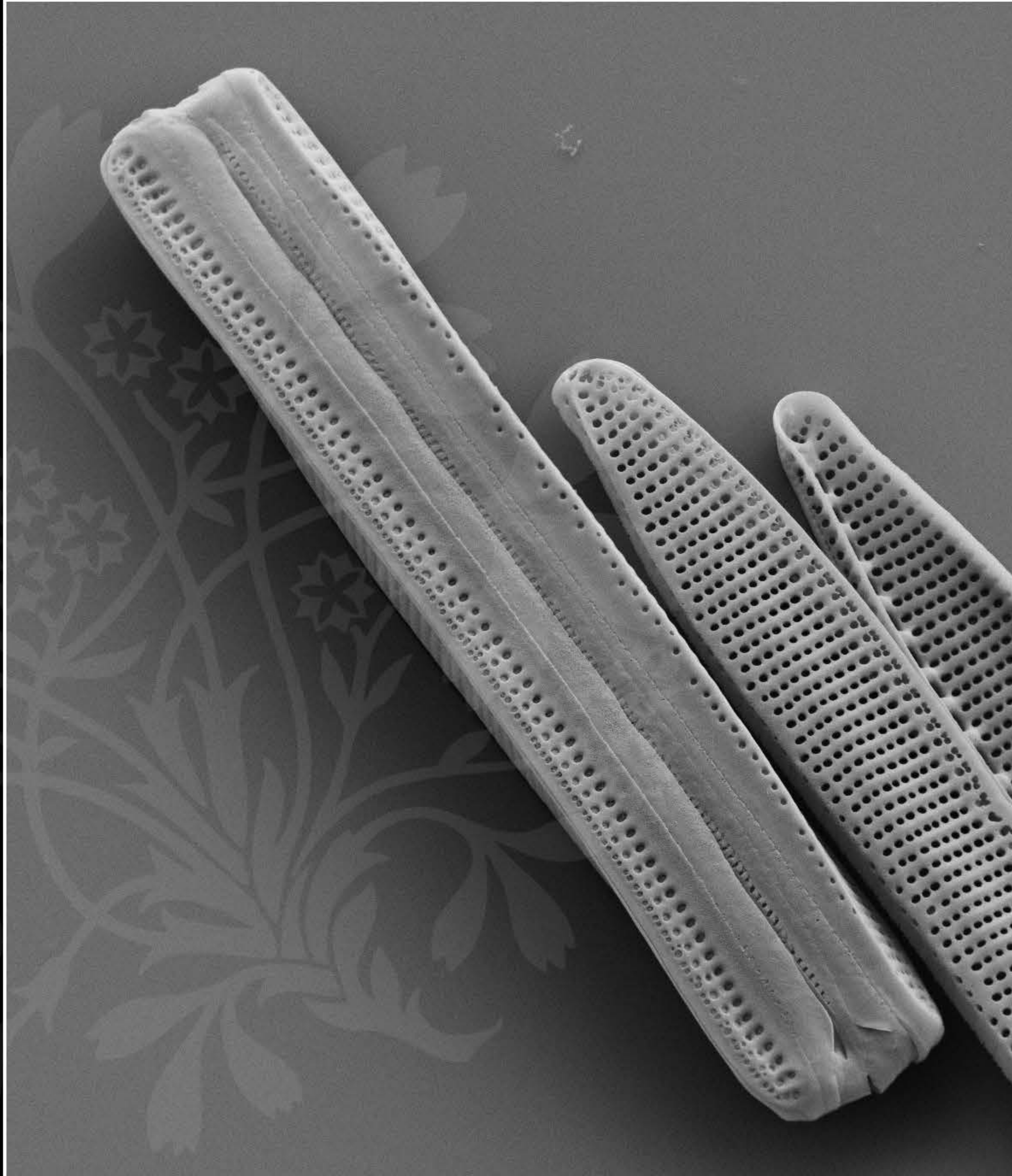
EHT = 4.50 kV

Signal A = SE2 Date :3 Oct 2017

WD = 4.8 mm

File Name = TCC885_06.tif





1 μm

Mag = 8.00 K X

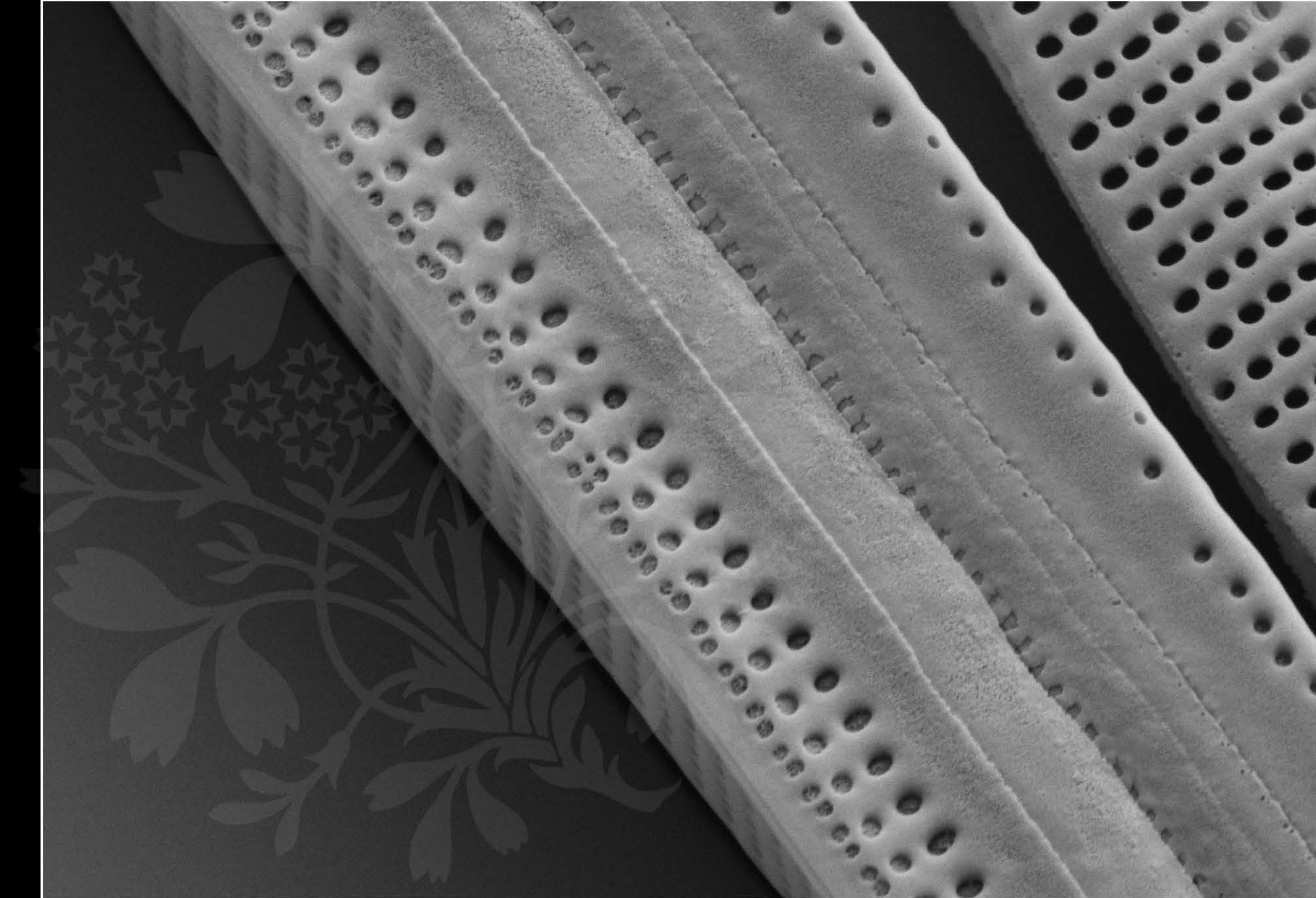
EHT = 4.50 kV

Signal A = SE2 Date :3 Oct 2017

WD = 4.7 mm

File Name = TCC885_07.tif





200 nm
└─┘

Mag = 30.00 K X

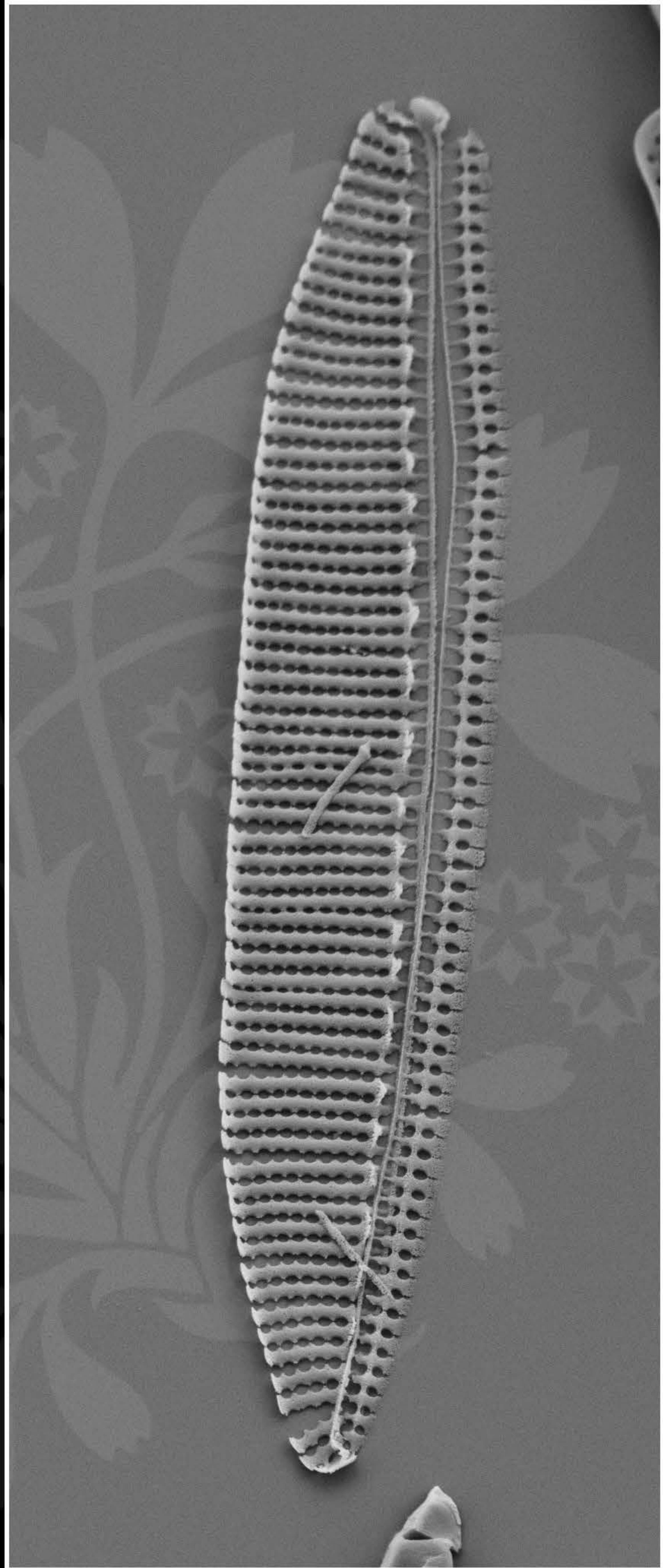
EHT = 4.50 kV

Signal A = SE2 Date : 3 Oct 2017

WD = 4.7 mm

File Name = TCC885_08.tif





1 μm

Mag = 7.00 K X

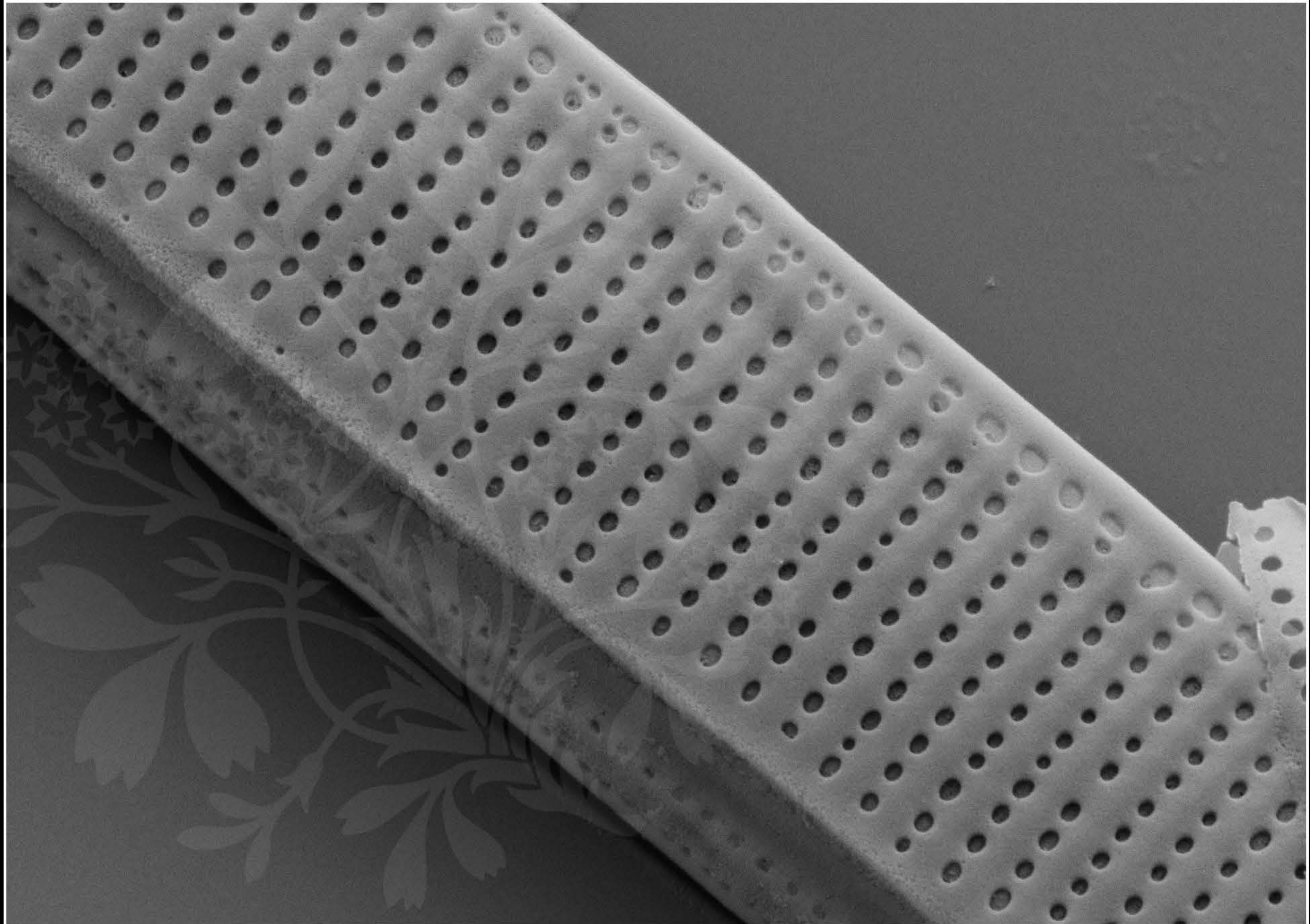
EHT = 4.50 kV

Signal A = SE2 Date :3 Oct 2017

WD = 4.7 mm

File Name = TCC885_09.tif





200 nm
└─┘

Mag = 30.00 K X

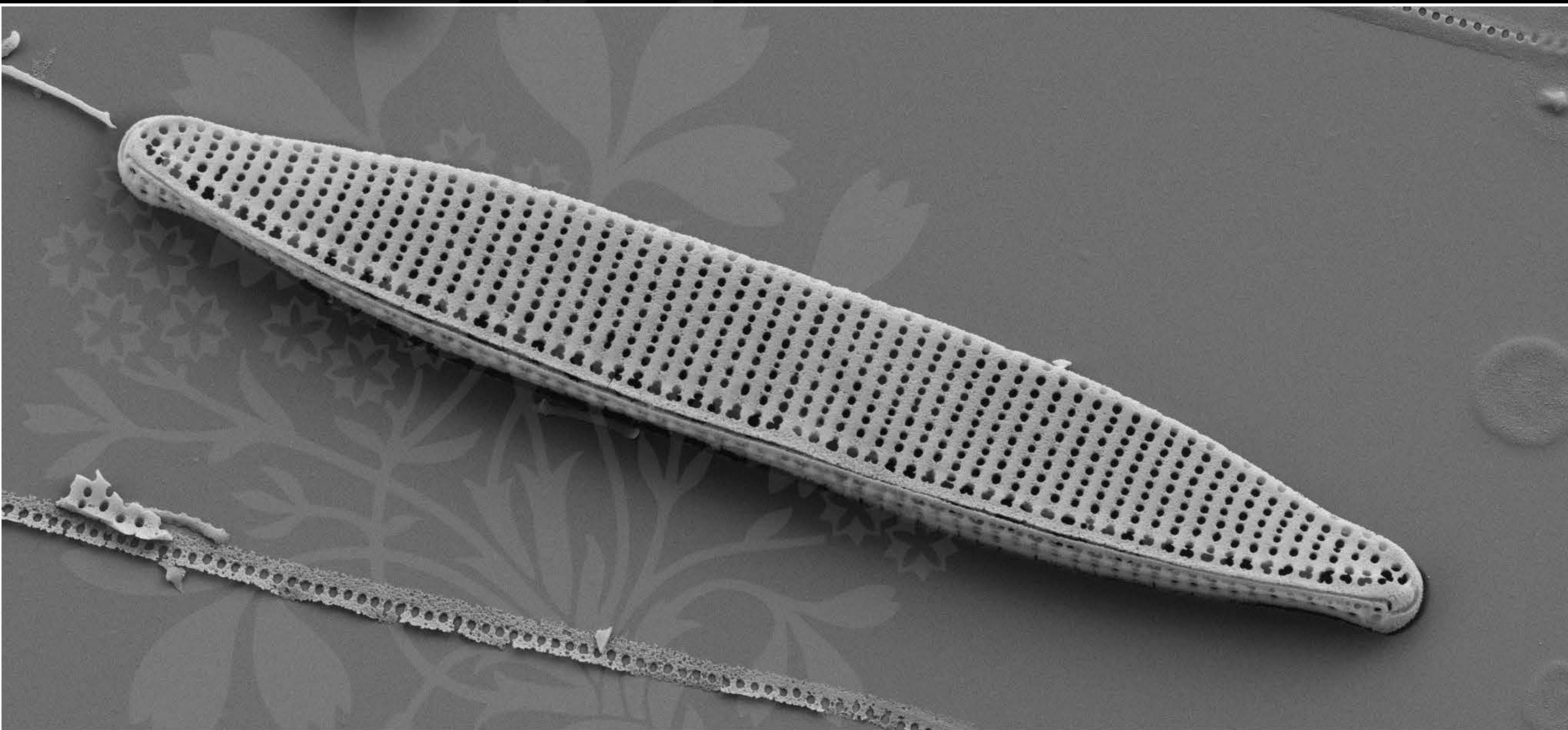
EHT = 4.50 kV

Signal A = SE2 Date : 3 Oct 2017

WD = 4.7 mm

File Name = TCC885_10.tif





1 μm

Mag = 10.00 K X

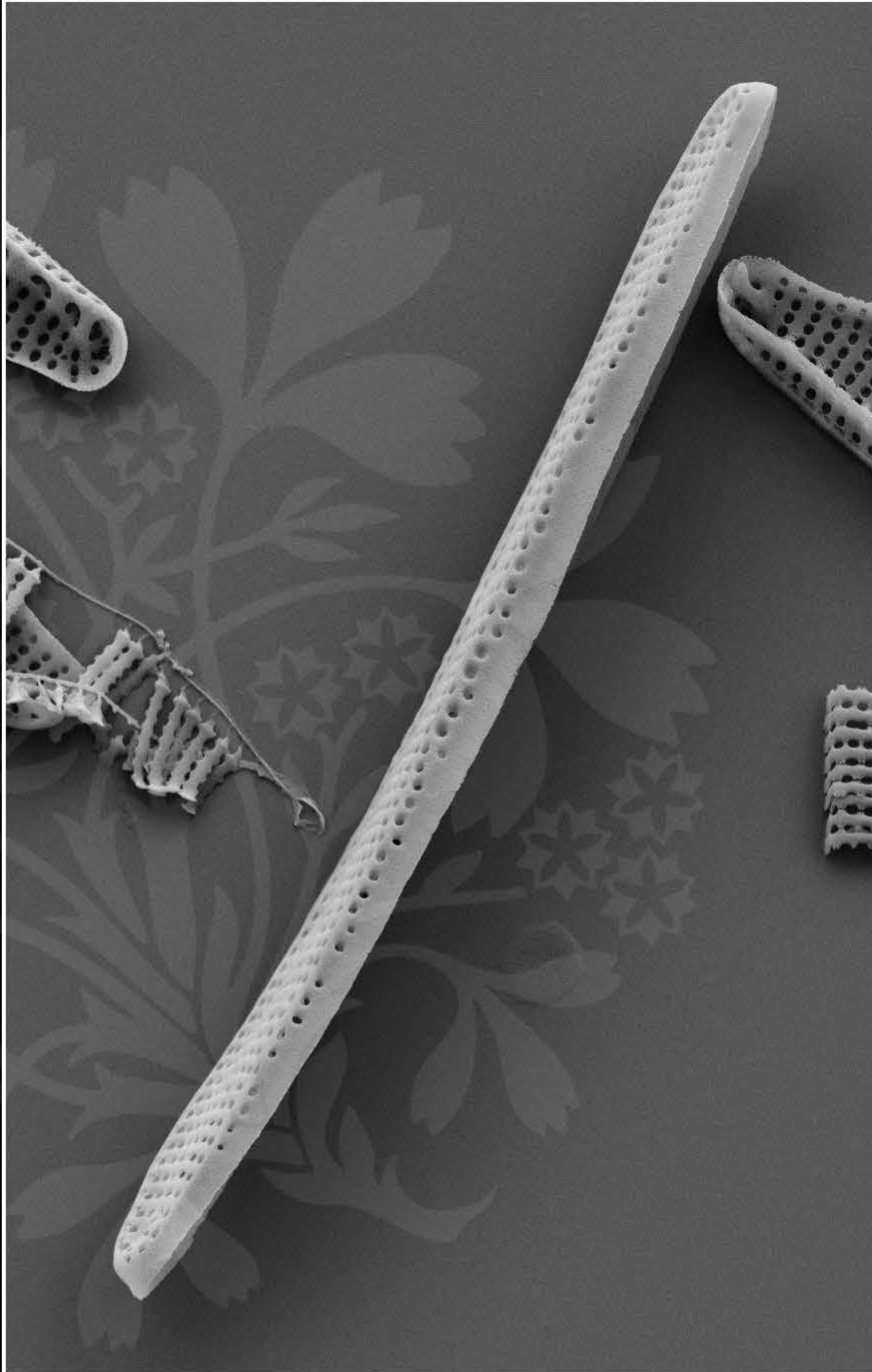
EHT = 4.50 kV

Signal A = SE2 Date : 3 Oct 2017

WD = 4.7 mm

File Name = TCC885_11.tif





1 μm

Mag = 8.00 K X

EHT = 4.50 kV

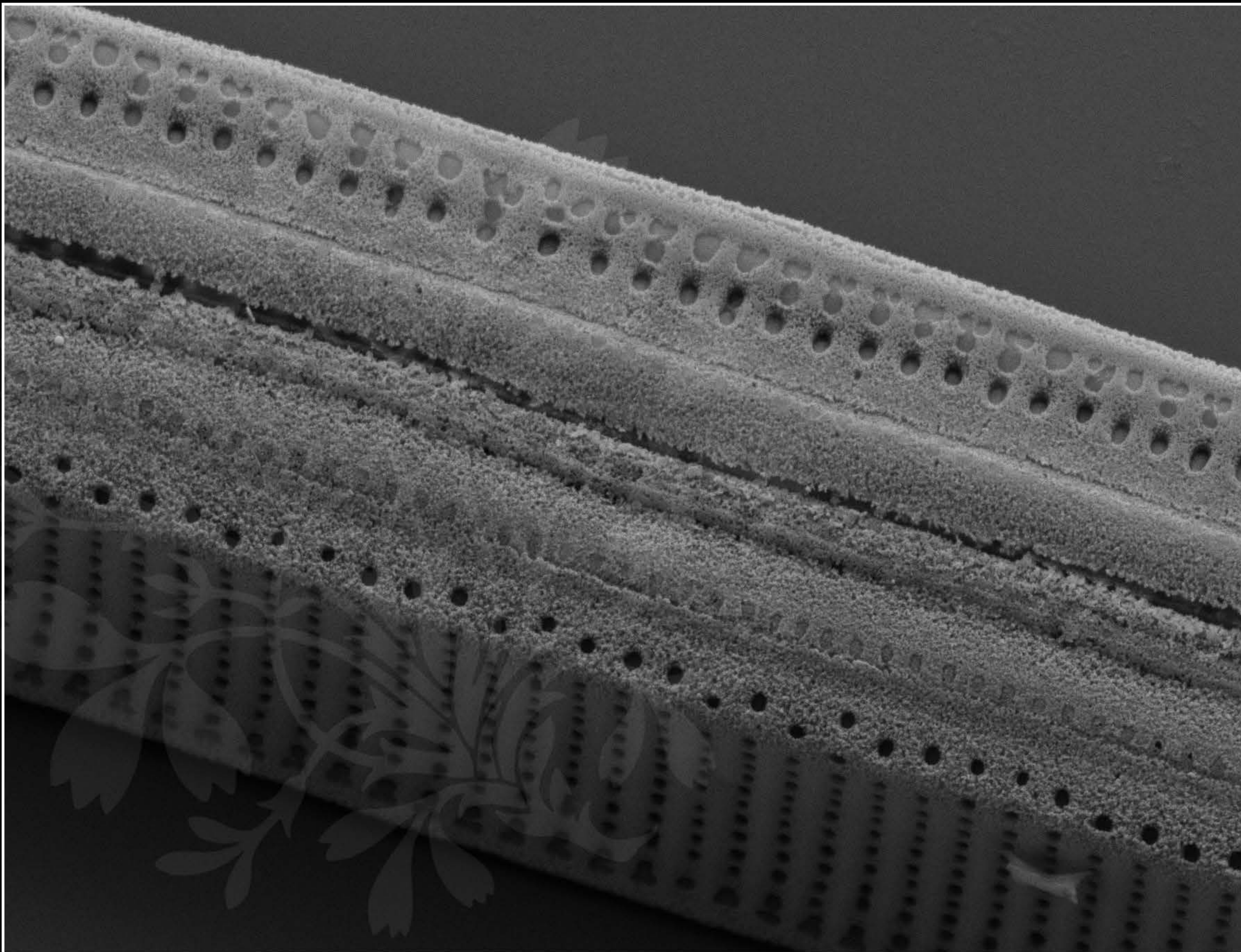
Signal A = SE2

Date : 3 Oct 2017

WD = 4.7 mm

File Name = TCC885_12.tif





300 nm
└───┘

Mag = 25.00 K X

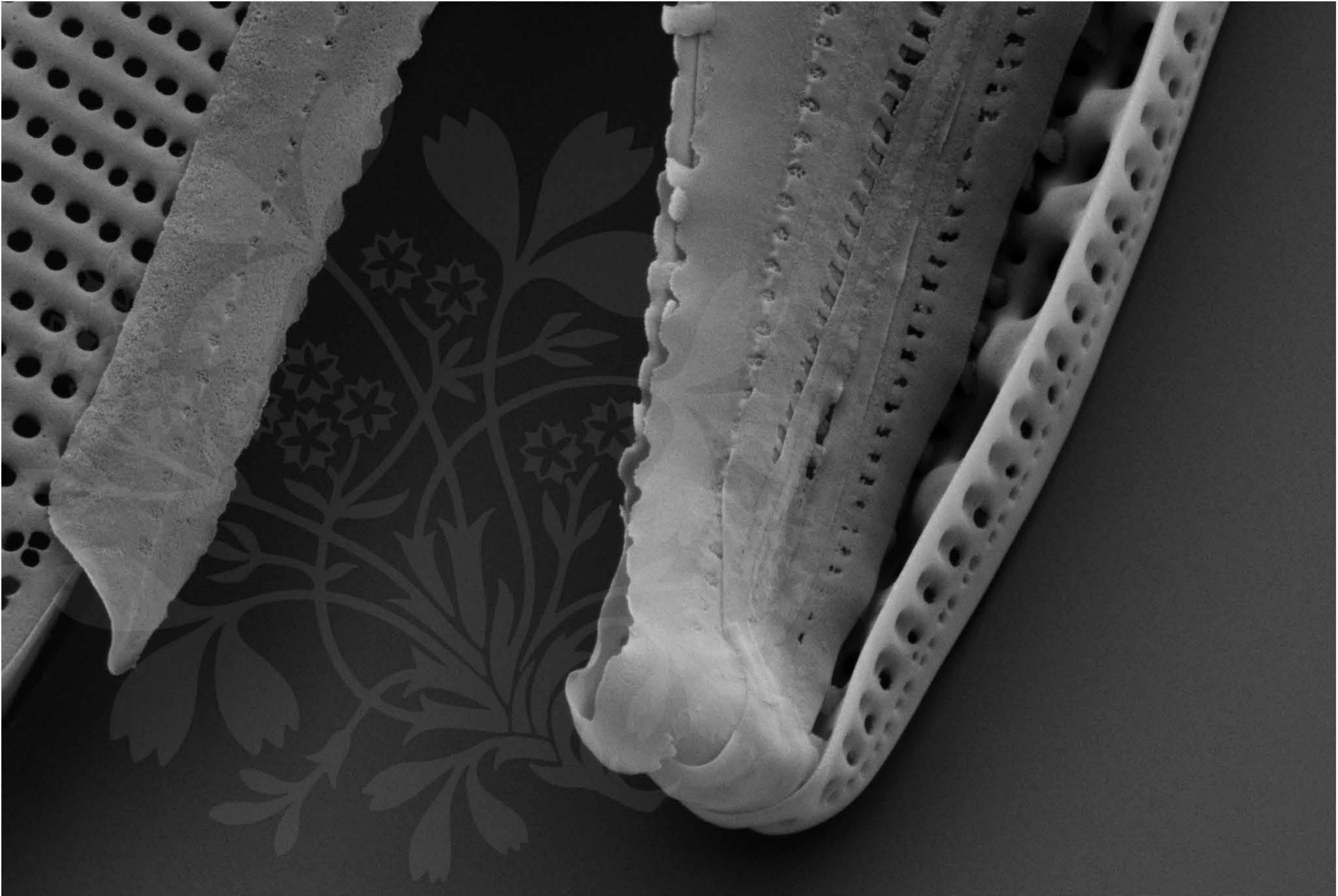
EHT = 4.50 kV

Signal A = SE2 Date :3 Oct 2017

WD = 4.7 mm

File Name = TCC885_13.tif





200 nm
└─┘

Mag = 30.00 K X

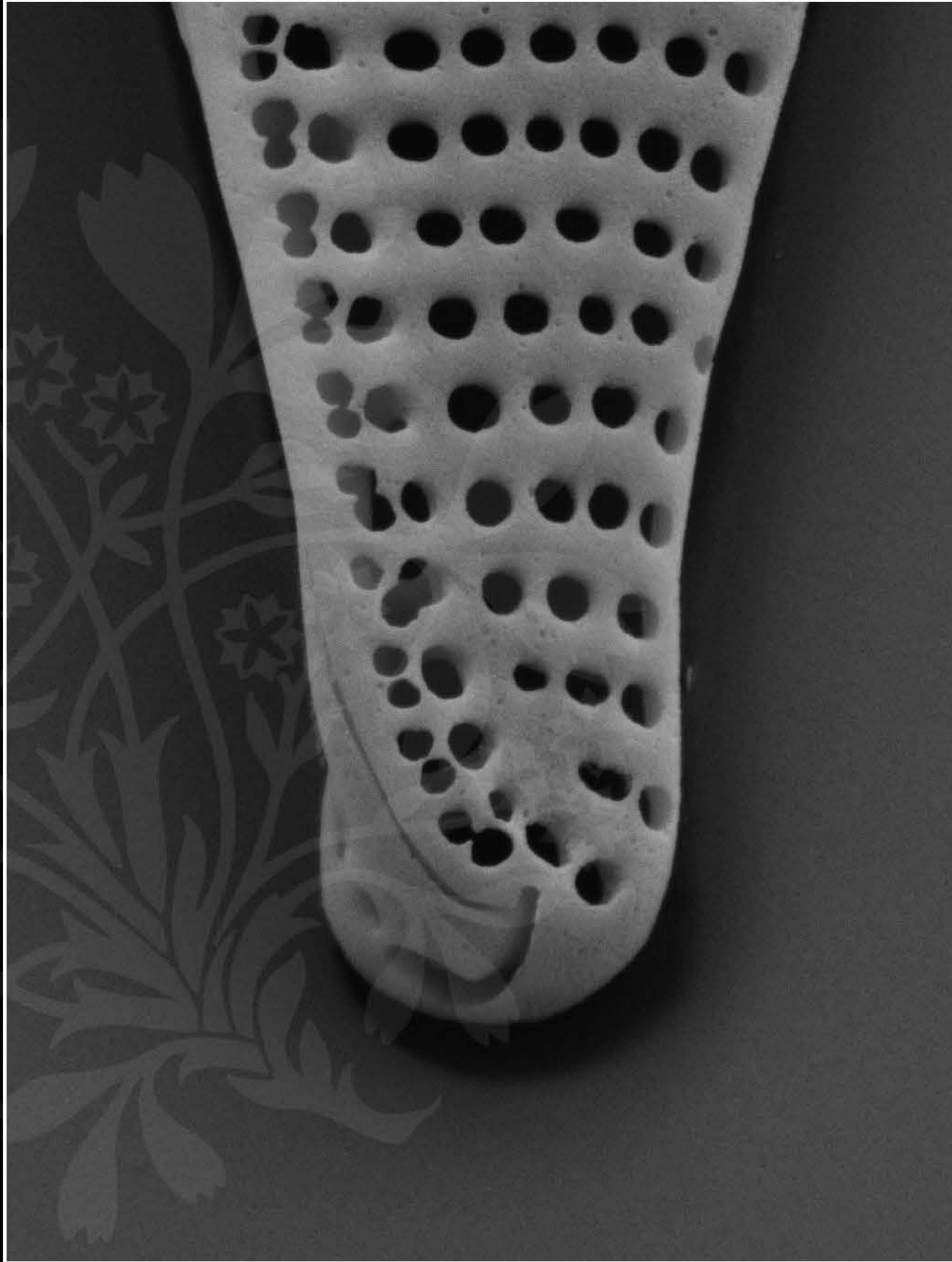
EHT = 4.50 kV

Signal A = SE2 Date :3 Oct 2017

WD = 4.7 mm

File Name = TCC885_14.tif





200 nm
└───┘

Mag = 40.00 K X

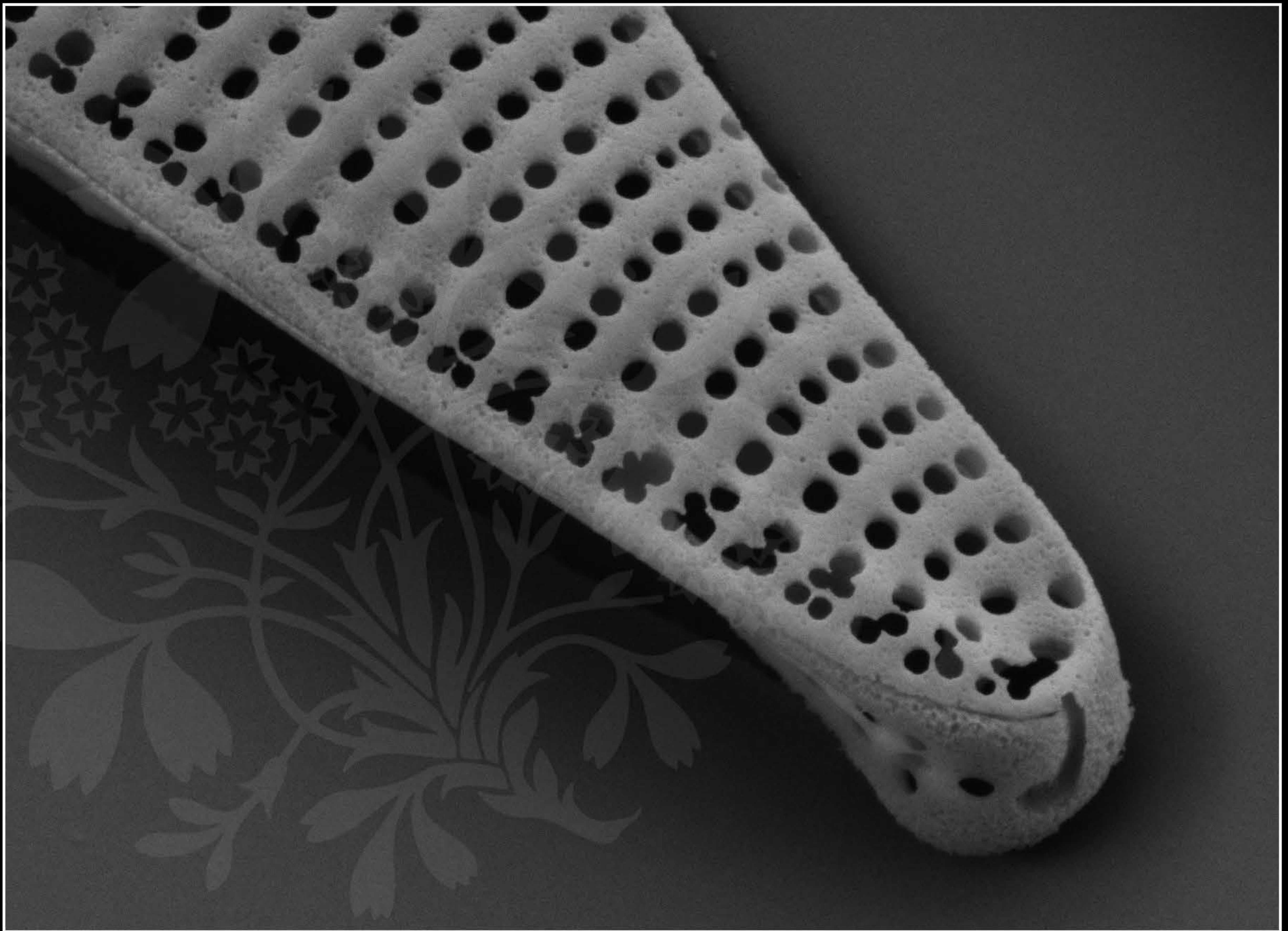
EHT = 4.50 kV

Signal A = SE2 Date : 3 Oct 2017

WD = 4.7 mm

File Name = TCC885_15.tif





200 nm
└───┘

Mag = 40.00 K X

EHT = 4.50 kV

Signal A = SE2 Date : 3 Oct 2017

WD = 4.7 mm

File Name = TCC885_16.tif

